

# NOBLE COUNTY TRACTOR, INC.

# Liquidation **Auction** Real Estate and Personal Property

SERVICE

NOBLE COUNTY TRACTOR

Noble County Tractors officially closed their doors on March 31st this year after 75 years of service and have commissioned Pickens Auctions to liquidate the remaining assets. The assets include Prime Perry, OK, commercial real estate, parts, shop tools, equipment, trucks, and trailers. One of the items included in the auction will be a 1959 Edsel with only 62,000 original miles that Richard sold brand new and purchased back from the original owner years later. Another item included in the offering is a 1949 GMC truck with 44,000 original miles.

We are truly honored to auction the real estate and assets of Noble County Tractor, Inc.

*Thank you, Richard and family for 75 years of service to the region!*



**NEW HOLLAND**

AGRICULTURE



**Saturday, May 6th, 9:00 a.m. - 629 Elm Street, Perry, OK**

**CONTACT:**

**Gregg Pickens, Auctioneer/Broker**

**405-747-9304**

**gregg@pickensauctions.com**

**pickensauctions.com**



**Pickens Auctions**

OKLAHOMA'S AUCTIONEER

OUR 63<sup>RD</sup> YEAR IN BUSINESS!



# Noble County Tractor enjoyed 75 years of successful business in sales and service!

*You must see this lifetime collection !*



**FORD CAR & TRUCK  
FORD NEW HOLLAND  
RHINO, MOTORCRAFT  
and more!**



*Manuals, hand tools,  
sorting bins, jacks,  
welders, tires, weights,  
truck parts, shop fans,  
fork lift, porta-cools,  
shelving, collectibles, ...*

“We are honored to be able to assist the Randall family and consider it a privilege to work for such a wonderful historic founding local business and family.”  
- Gregg Pickens, Auctioneer/Broker



## Terms

REAL ESTATE \$10,000 per parcel or \$25,000 down for the entirety day of Auction-balance due at closing.  
Possession at closing-45 day close period.  
  
NO BUYER'S PREMIUM AT THIS EVENT

PERSONAL PROPERTY Cash, Check or major credit card, day of auction.  
(3% convenience fee added to credit card purchases)





*Auction starts at 9:am sharp!*



*Tool boxes, shop tables, vices, compressors, shop heater, office equipment, grinders, lifts and MORE!*



*If you need it in a shop...it's here!*



Join us for a preview  
& light lunch!  
May 5, 11:00 am - 2:00 pm



More photos online at

**[pickensauctions.com](http://pickensauctions.com)**





OUR 63<sup>RD</sup> YEAR IN BUSINESS!

OKLAHOMA'S AUCTIONEER

619 S Lewis, Stillwater, OK 74074 - 405-533-2600



# NOBLE COUNTY TRACTOR, INC.

# Liquidation Auction

*Real Estate and Personal Property*

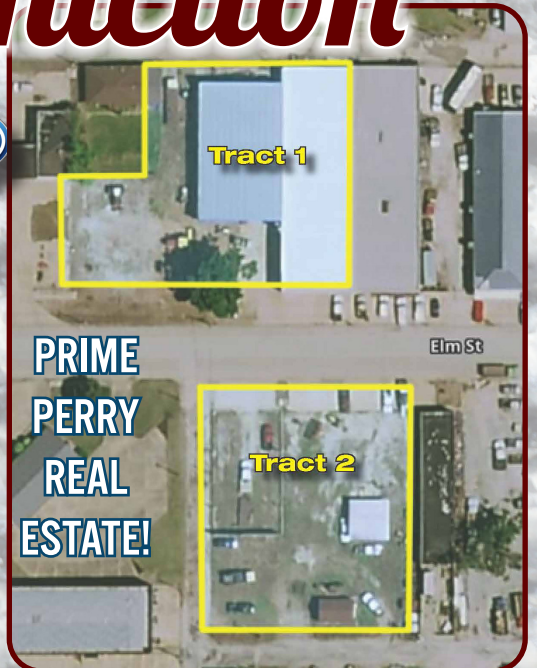
*It all sells...Saturday, May 6th!*

NOBLE COUNTY TRACTOR, INC.

# Liquidation Auction



**NEW HOLLAND**  
AGRICULTURE



Commercial real estate, parts, shop tools, equipment, trucks, and trailers. Including a 1959 Edsel with only 62,000 original miles and a 1949 GMC truck with 44,000 Original miles!

**Saturday, May 6 - 9:00 a.m. - 629 Elm St., Perry, Oklahoma**